

# City of Glendale

## Introduction to Districting

June 13, 2023

Douglas Johnson  
National Demographics Corporation

# The Districting Process

Step	Description
<b>1<sup>st</sup> Council Hearing</b> June 13	Held prior to release of draft maps. Education and to solicit input on the composition of districts.
<b>1<sup>st</sup> Round of Community Forums</b>	First round: 1 virtual workshop, 6 in-person workshops + pop-up events. Beginning June 13 through tent. July 27
<b>2<sup>nd</sup> Council Hearing</b> July 11	Very similar presentation to the first hearing, but with a summary of feedback from the forums. Council opportunity to give direction to NDC.
<i>Initial Deadline for the public to submit maps</i> <i>August 5</i>	Maps must be submitted far enough in advance to allow NDC to download, input and process the maps for posting online before the August 8 posting deadline.
<i>Deadline to post initial draft maps on project website</i> <i>August 8</i>	Maps must be posted at least 7 days prior to 3 <sup>rd</sup> hearing.
<b>3<sup>rd</sup> Council Hearing</b> August 15	First formal public and Council consideration of initial draft maps. Opportunity for Council select “focus” maps options and to request new or revised maps.

# The Districting Process

Step	Description
<b>2<sup>nd</sup> Round of Community Forums</b>	Second round: 1 virtual workshop, 6 in-person workshops + pop-up events. Beginning August 17 through tent. September 7
<i>Deadline to submit maps</i> <i>September 28</i>	Maps must be submitted far enough in advance to allow NDC to download, input and process the maps for posting online.
<i>Deadline to post new maps</i> <i>October 3</i>	Maps must be posted at least 7 days prior to 4 <sup>th</sup> hearing.
<b>4<sup>th</sup> Council Hearing</b> October 10	Public & Council considers “focus” maps and any new or revised maps. Preferred map and election sequence selected and 1 <sup>st</sup> reading of adoption ordinance.
<b>5<sup>th</sup> Council Hearing and Map Adoption</b> October 24	Council selects map via ordinance, contingent on voter approval. Final map must be posted at least 7 days prior to adoption.
<b>Citywide Vote</b> March 5, 2024	Vote on transition to by-district elections on primary and (at-large) City Council election ballot

# Districting Rules and Goals

## 1. Federal Laws

1. **Equal Population**
2. **Federal Voting Rights Act**
3. **No Racial Gerrymandering**



## 2. California Criteria for Cities

1. **Geographically contiguous**
2. **Undivided neighborhoods and “communities of interest”**  
(Socio-economic geographic areas that should be kept together)
3. **Easily identifiable boundaries**
4. **Compact**  
(Do not bypass one group of people to get to a more distant group of people)

### **Prohibited:**

“Shall not favor or discriminate against a political party.”

## 3. Other Traditional Redistricting Principles

1. **Respect voters’ choices / continuity in office**
2. **Future population growth**

# Demographic Summary

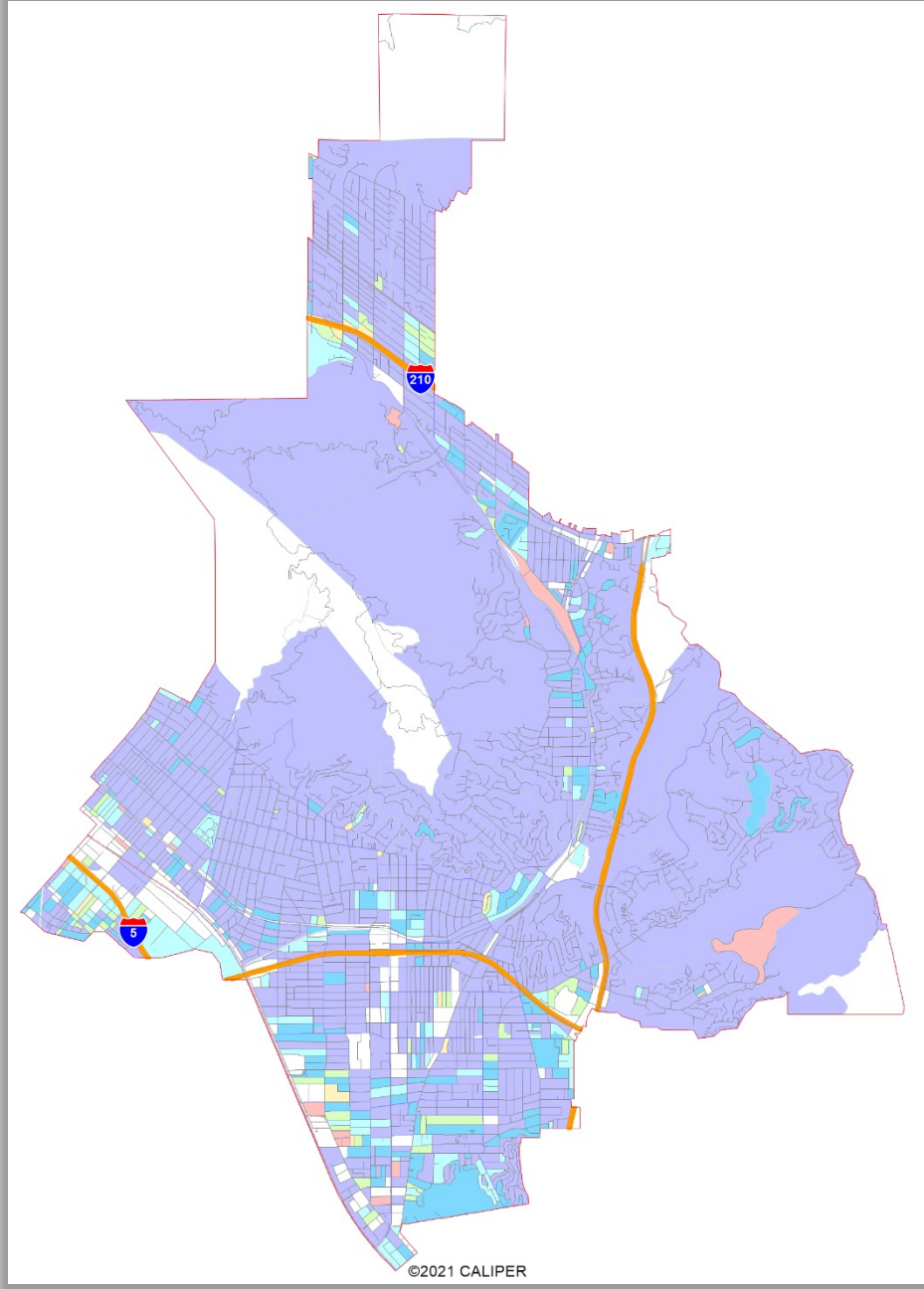
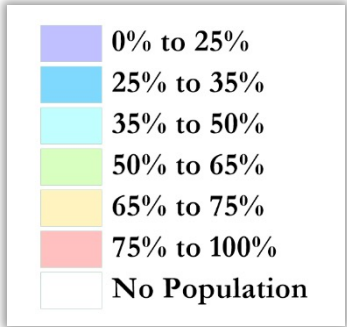
Each of the 6 districts must contain about 32,830 people.

Category	Field	Total	Category	Field	Total
2020 Census	Total Population	196,980	Age	age0-19	20%
Total Pop.	Hispanic/Latino	17%		age20-60	55%
	NH White	62%		age60plus	25%
	NH Black	2%	Immigration	immigrants	52%
	NH Asian/Pac.Isl.	18%		naturalized	66%
	NH Native Amer.	0%	Language spoken at home	english	33%
Citizen Voting Age Pop	Total	129,718		spanish	14%
	Hisp	17%		asian-lang	10%
	NH White	65%		other lang	43%
	NH Black	3%	Language Fluency	Speaks Eng. "Less than Very Well"	32%
	Asian/Pac.Isl.	15%		Education (among those age 25+)	hs-grad
	Native Amer.	0%	bachelor		28%
Voter Registration (Nov 2020)	Total	118,402	graduatedegree	15%	
	Latino est.	17%	Child in Household	child-under18	27%
	Spanish-Surnamed	15%	Pct of Pop. Age 16+	employed	62%
	Asian-Surnamed	6%		Household Income	income 0-25k
	Filipino-Surnamed	3%	income 25-50k		15%
	NH White est.	73%	income 50-75k		14%
NH Black	2%	income 75-200k	37%		
Voter Turnout (Nov 2020)	Total	85,200	income 200k-plus		13%
	Latino est.	17%	Housing Stats	single family	36%
	Spanish-Surnamed	16%		multi-family	64%
	Asian-Surnamed	6%		rented	66%
	Filipino-Surnamed	3%		owned	34%
	NH White est.	72%	Voter Turnout (Nov 2018)	Total	53,067
NH Black	2%	Latino est.		18%	
Voter Turnout (Nov 2018)	Total	53,067		Spanish-Surnamed	17%
	Latino est.	18%		Asian-Surnamed	6%
	Spanish-Surnamed	17%		Filipino-Surnamed	3%
	Asian-Surnamed	6%	NH White est.	71%	
	Filipino-Surnamed	3%	NH Black est.	2%	
NH White est.	71%	Total population data from California's adjusted 2020 Census data. Citizen Voting Age Population, Age, Immigration, and other demographics from the 2017-2021 American Community Survey and Special Tabulation 5-year data. Turnout and Registration data from California Statewide Database. "Latino" figures calculated by NDC using Census Bureau's Latino undercount by surname estimate.			
NH Black est.	2%				



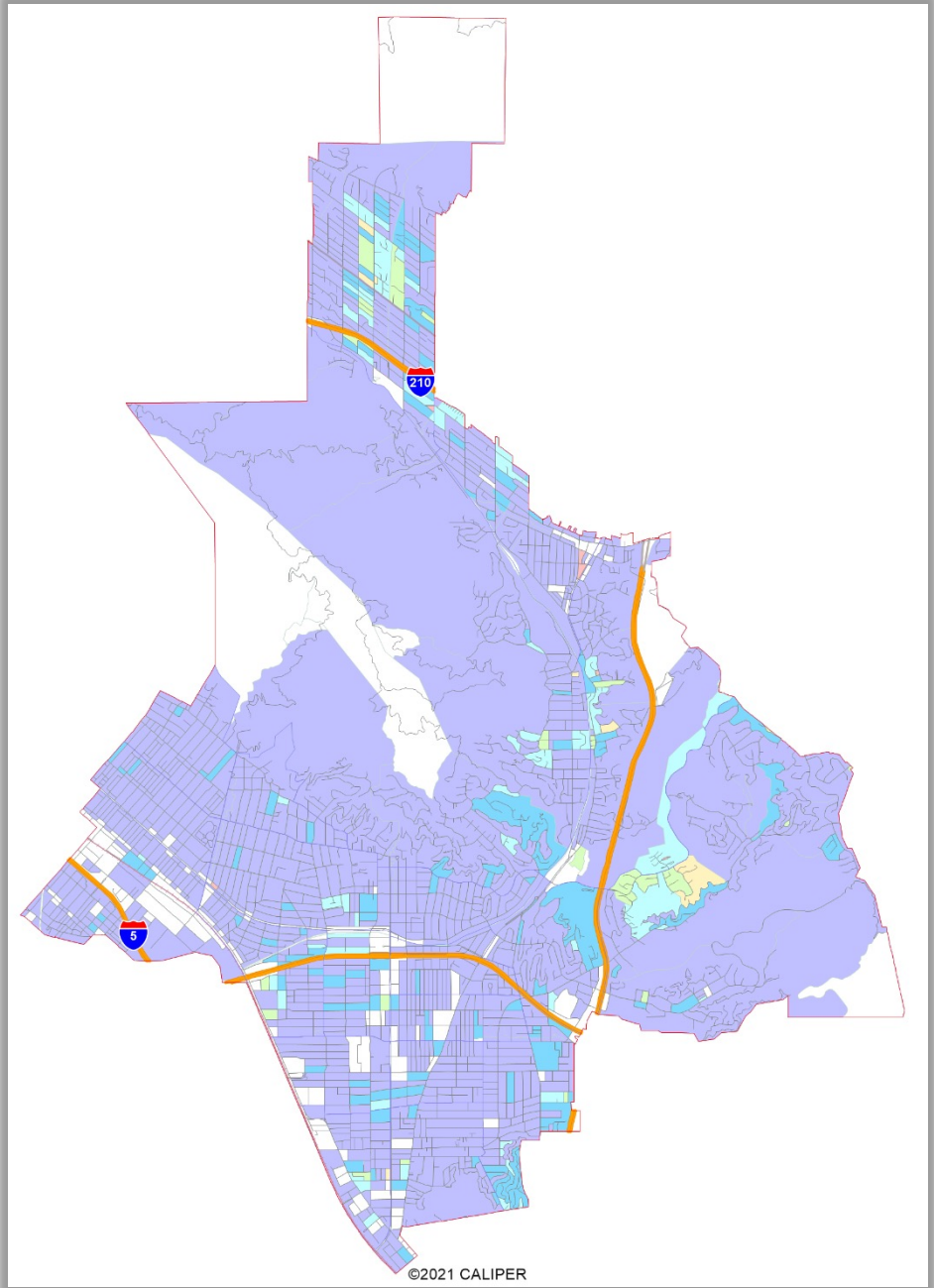
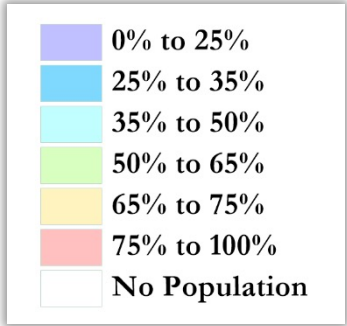
# Latino CVAP

Latinos are somewhat more concentrated along the I-5 corridor and Los Angeles City border.



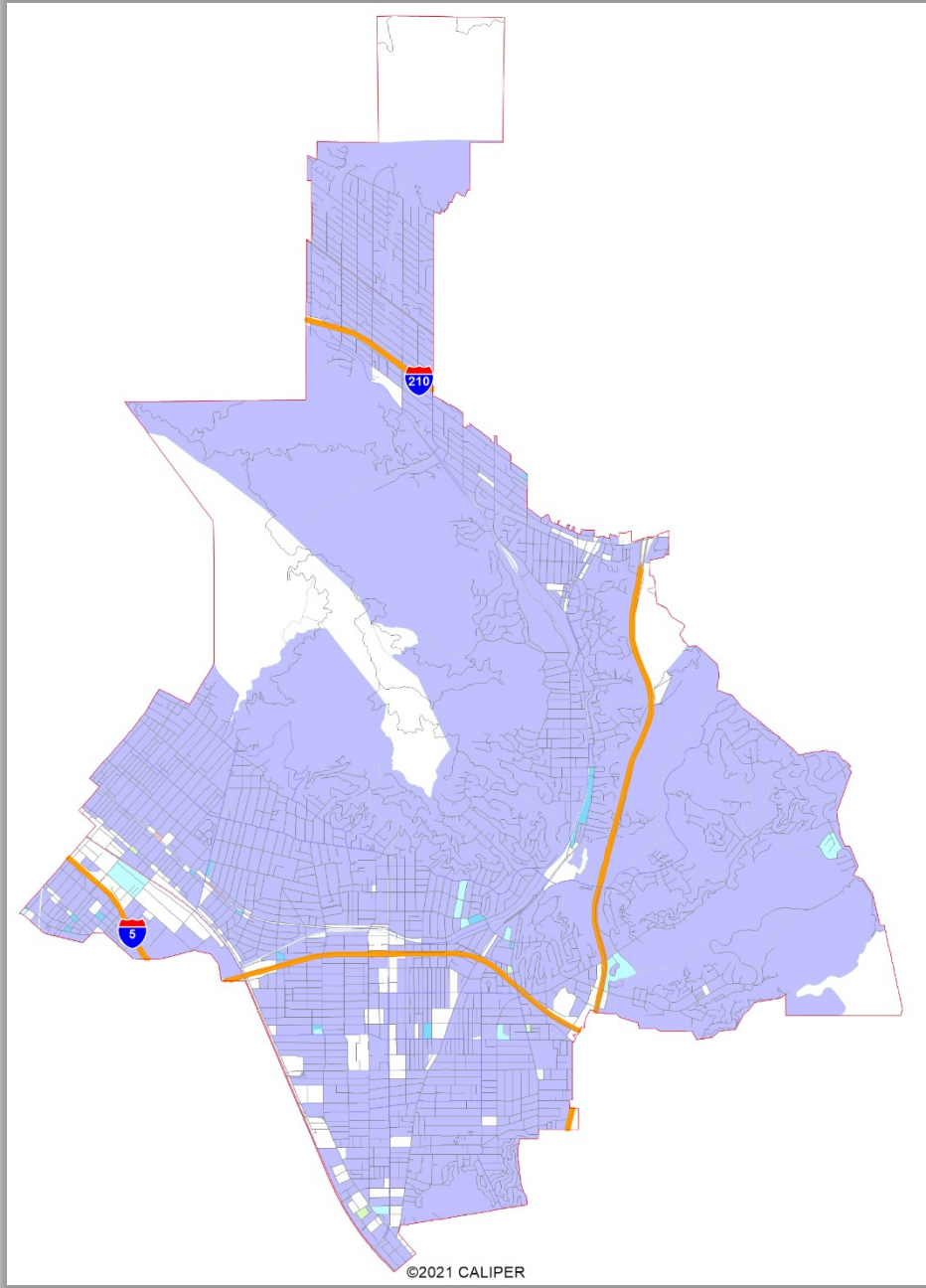
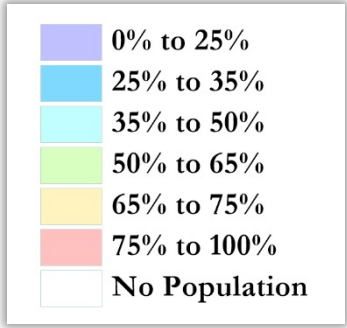
# Asian-American CVAP

Asian-Americans concentrated in the north and Rancho San Rafael.



# African-American CVAP

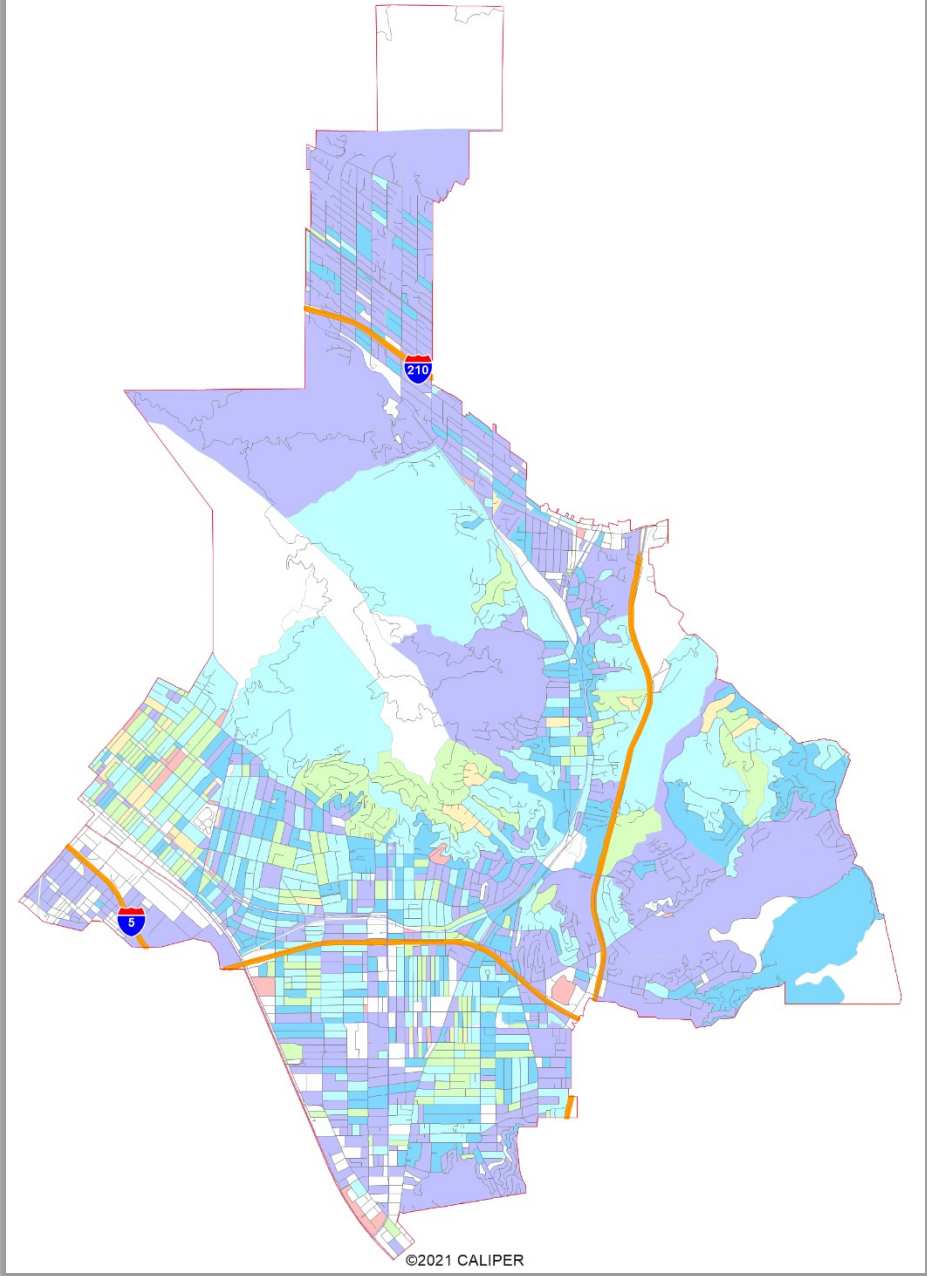
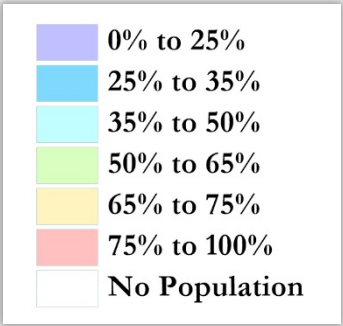
African-Americans are not geographically concentrated in any specific part of the City.





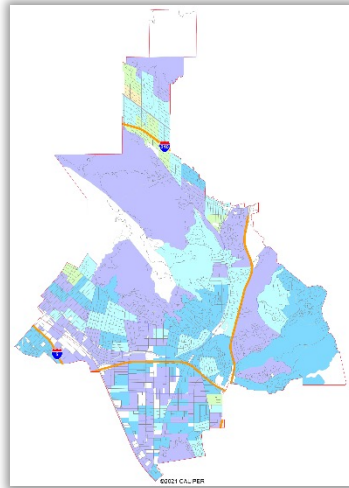
# Community of Interest: Armenian % of Registered Voters

Data from PDI.

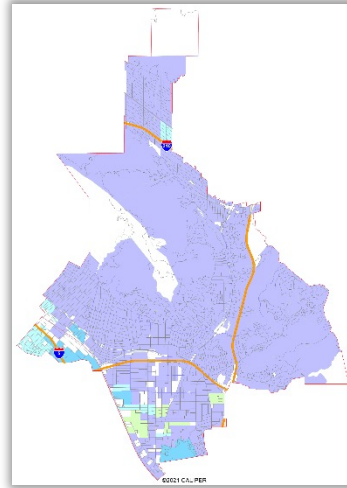


# Other Potential Communities of Interest: Socio-Economic Demographics

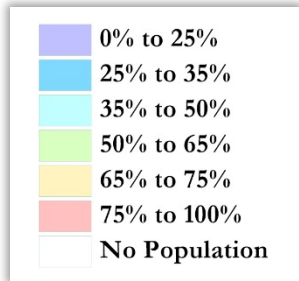
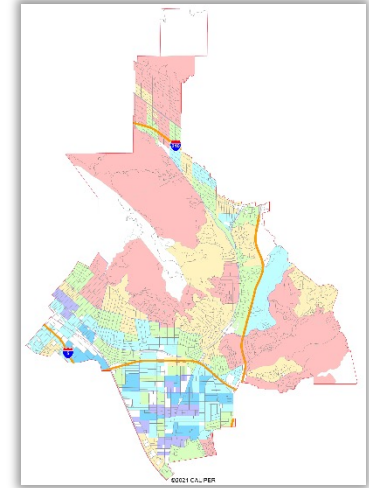
Child at home



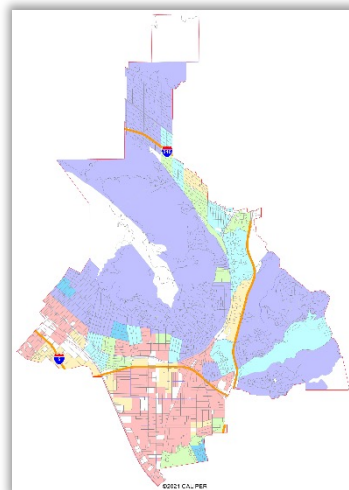
Spanish spoken at home



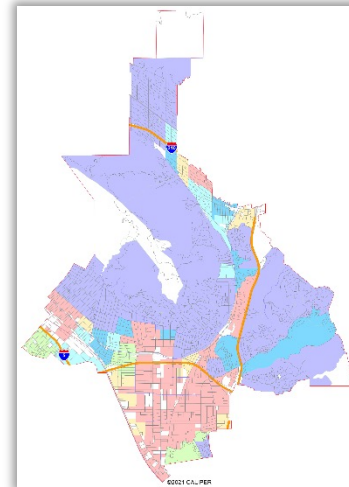
Household income over \$75,000 / yr.



Renters

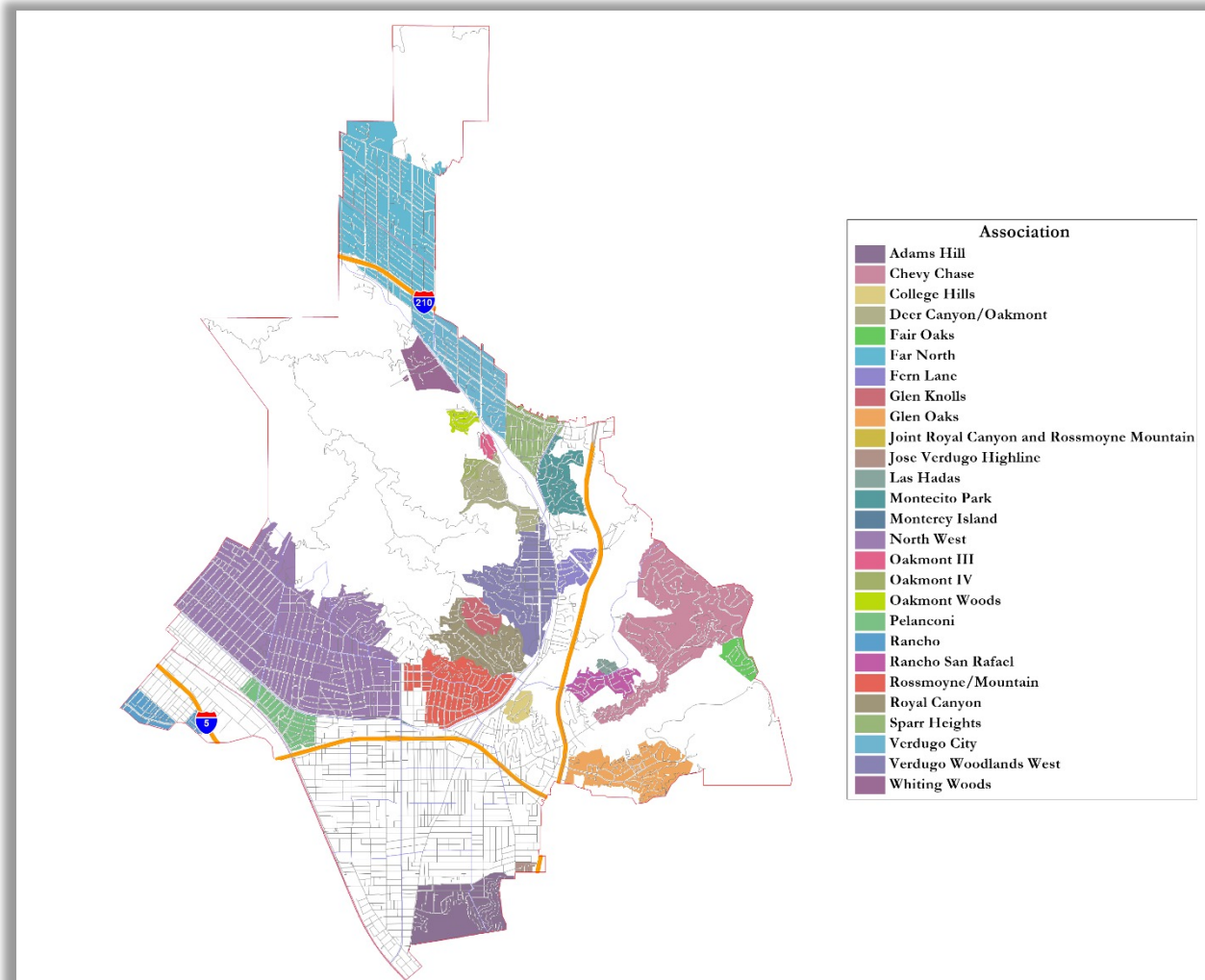


Multi-Family Housing  
(Apartments or Condos)



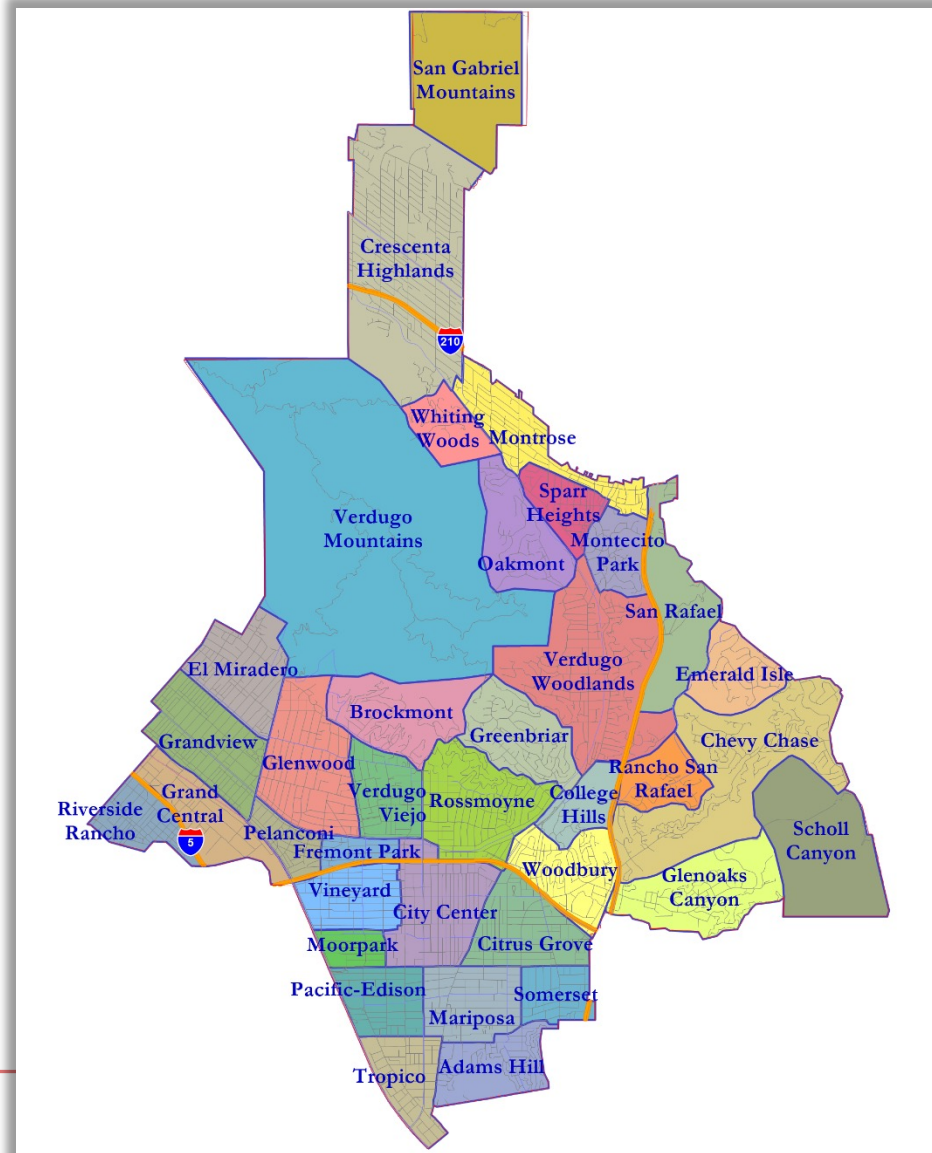
# Other Possible Geographic Communities (1)

## Homeowner Associations



# Other Possible Geographic Communities (2)

## Unofficial Rough Neighborhoods



# Defining Neighborhoods

---

**1<sup>st</sup> Question: What is your neighborhood?**

**2<sup>nd</sup> Question: What are its geographic boundaries?**

**Examples of physical features defining a neighborhood boundary:**

- ❑ Natural neighborhood dividing lines, such as highway or major roads, rivers, canals and/or hills
- ❑ Areas around parks or schools
- ❑ Other neighborhood landmarks

**In the absence of public testimony, planning records and other similar documents may provide definition.**





# Beyond Neighborhoods: Defining Communities of Interest

---

## 1<sup>st</sup> Question: What defines your community?

- ❑ Geographic Area, plus
- ❑ Shared issue or characteristic
  - ❑ Shared social or economic interest
  - ❑ Impacted by city policies
- ❑ Tell us “your community’s story”

## 2<sup>nd</sup> Question: Would this community benefit from being “included within a single district for purposes of its effective and fair representation”?

- ❑ Or would it benefit more from having multiple representatives?

Definitions of Communities of Interest may not include relationships with political parties, incumbents, or political candidates.

# Public Mapping and Map Review Tools

---

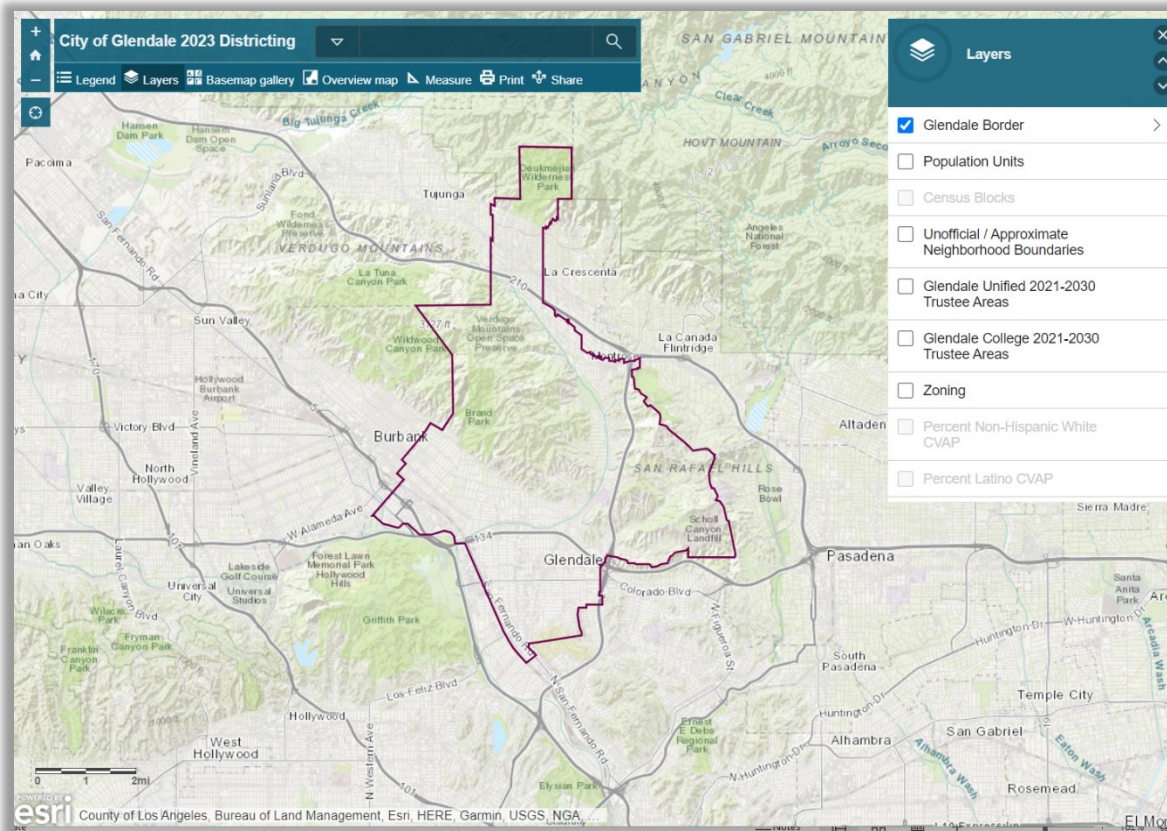
- ❑ **Different tools for different purposes**
- ❑ **Different tools for different levels of technical skill and interest**
  - ❑ Simple “review draft maps” tool
  - ❑ Paper-based simple “Draw a draft map” tools
  - ❑ Powerful, data-rich “Draw a draft map” online tool

Whether you use the online mapping tool, the paper kit, or just draw on a napkin, we welcome your maps!

# Interactive Review Map

## For Viewing Maps, not Drawing Them

- ❑ Demographic data
- ❑ Population Unit details
- ❑ Zoom in and out
- ❑ Search by address
- ❑ View (and overlay) draft maps, when available

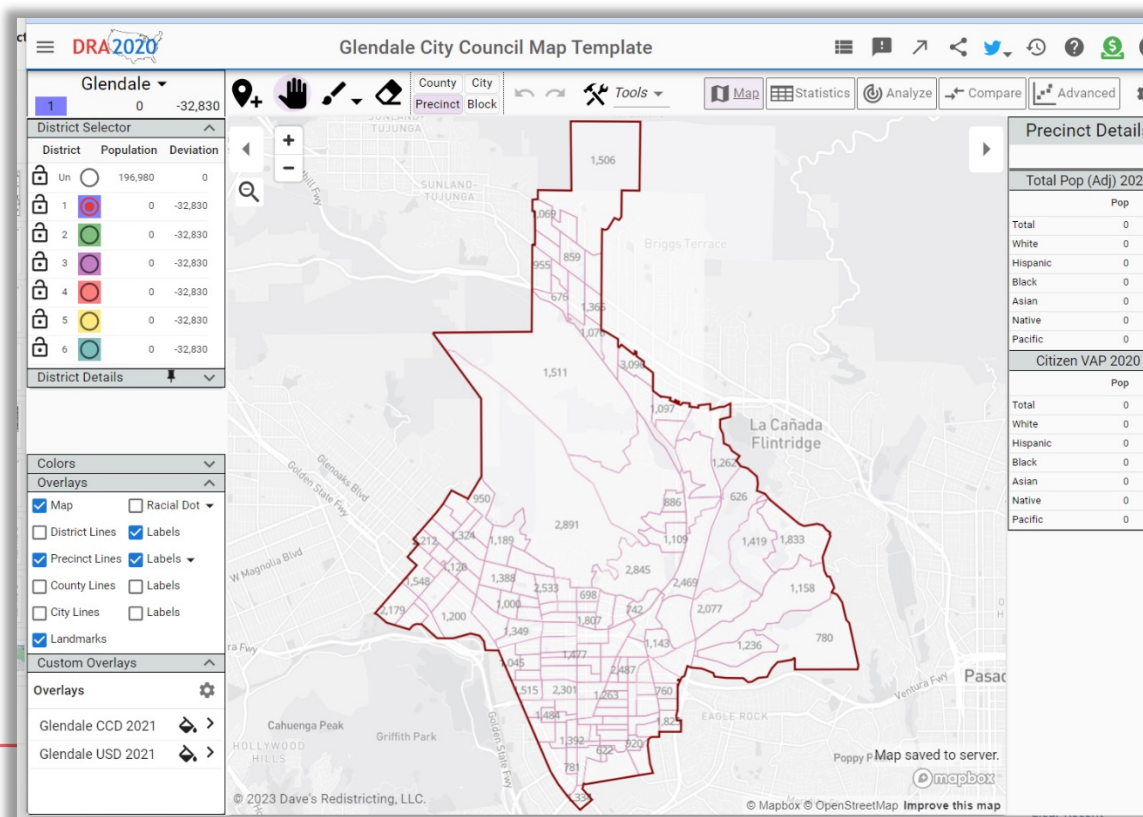




# DRA (Dave's Redistricting App)

## Draw Your Community of Interest or a Full District Map

- Easy-to-use online mapping tool
- Full demographic and geographic database
- Email a link to your map to the City and publish or share





# Outreach and Engagement

---

**Tripepi Smith is on board to support this process with outreach and engagement efforts including the following:**

- Dedicated website: [www.mapglendale.org](http://www.mapglendale.org)
- In-person workshops
- Virtual workshops
- Pop-up events in the community
- Social media (including coordinating online ads)
- Animated explainer video
- Flyers
- Community group outreach
- Coordinating with the City on interpretation/translation of materials

**Tripepi Smith will present during the next Public Hearing to share a more in-depth update on outreach plans and efforts.**

# Public Hearing & Discussion

---

- ❑ What is your neighborhood or community of interest? What ties it together, and what are its boundaries?
- ❑ What other notable areas are in the City, and what are their boundaries?
- ❑ Any questions about the mapping tools?