



City of Glendale

Introduction to Districting

Douglas Johnson, National Demographics Corporation
Sydni Overly, Tripepi Smith

Introductions

Today's Goals

You Learn from the Experts

Experts Listen to *You*

Mapping Tools Overview

You Leave Empowered to Give Effective Feedback

Why You Should Care

- Democracy works better when people are engaged
- You are the experts on your community
- You are the experts on your neighborhood
- The districts determined in this process will be
around until 2031

Presentation Overview

- I. Background: The Districting Process
- II. Legal Requirements for Districts
- III. Demographic Profile of Glendale
- IV. Community of Interest Discussion
- V. Public Mapping Tools
- VI. Q&A
- VII. How to Stay Engaged

Today's Goal: You leave empowered to participate effectively in the districting process

The Districting Process

Step	Description
1st Council Hearing June 13	Held prior to release of draft maps. Education and to solicit input on the composition of districts.
1st Round of Community Forums	First round: 1 virtual workshop, 6 in-person workshops + pop-up events. Beginning June 13 through July 27
2nd Council Hearing July 11	Very similar presentation to the first hearing, but with a summary of feedback from the forums. Council opportunity to give direction to NDC.
<i>Initial Deadline for the public to submit maps</i> <i>August 5</i>	Maps must be submitted far enough in advance to allow NDC to download, input and process the maps for posting online before the August 8 posting deadline.
<i>Deadline to post initial draft maps on project website</i> <i>August 8</i>	Maps must be posted at least 7 days prior to 3 rd hearing.
3rd Council Hearing August 15	First formal public and Council consideration of initial draft maps. Opportunity for Council to select “focus” maps options and to request new or revised maps.

The Districting Process

Step	Description
2nd Round of Community Forums	Second round: 1 virtual workshop, 6 in-person workshops + pop-up events. Beginning August 17 through September 7
<i>Deadline to submit maps September 28</i>	Maps must be submitted far enough in advance to allow NDC to download, input and process the maps for posting online.
<i>Deadline to post new maps October 3</i>	Maps must be posted at least 7 days prior to 4 th hearing.
4th Council Hearing October 10	Public & Council to consider “focus” maps and any new or revised maps. Preferred map and election sequence selected and 1 st reading of adoption ordinance.
5th Council Hearing and Map Adoption October 24	Council selects map via ordinance, contingent on voter approval. Final map must be posted at least 7 days prior to adoption.
Citywide Vote March 5, 2024	Vote on transition to by-district elections on primary and (at-large) City Council election ballot

Districting Rules and Goals

1. Federal Laws

1. **Equal Population**
2. **Federal Voting Rights Act**
3. **No Racial Gerrymandering**



2. California Criteria for Cities

1. **Geographically contiguous**
2. **Undivided neighborhoods and “communities of interest”**
(Socio-economic geographic areas that should be kept together)
3. **Easily identifiable boundaries**
4. **Compact**
(Do not bypass one group of people to get to a more distant group of people)

Prohibited:

“Shall not favor or discriminate against a political party.”

3. Other Traditional Redistricting Principles

1. **Respect voters’ choices / continuity in office**
2. **Future population growth**

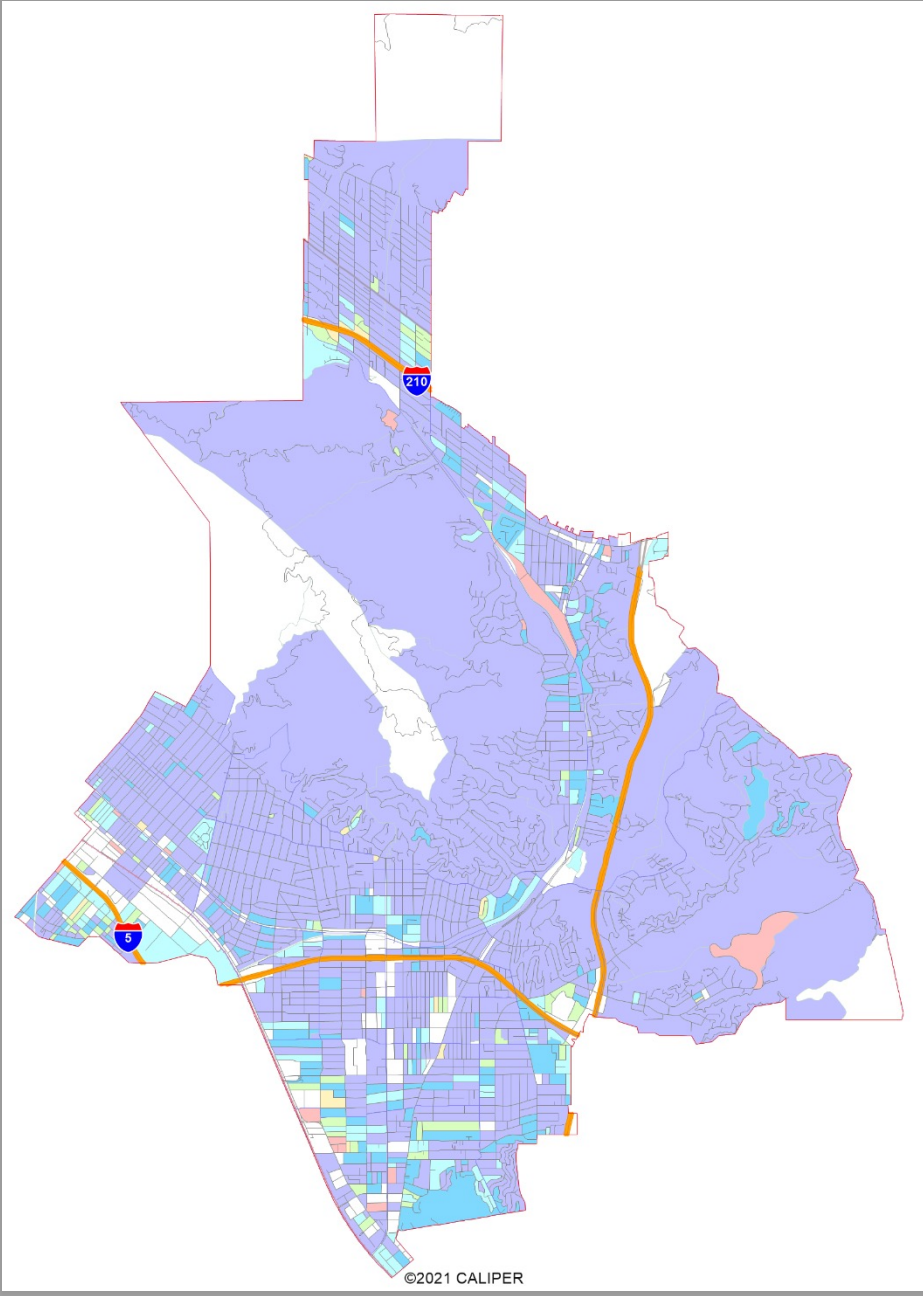
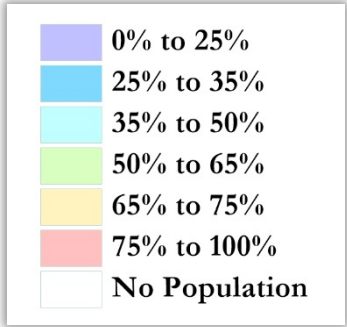
Demographic Summary

Each of the 6 districts must contain about 32,830 people.

Category	Field	Total	Category	Field	Total
2020 Census	Total Population	196,980	Age	age0-19	20%
Total Pop.	Hispanic/Latino	17%		age20-60	55%
	NH White	62%		age60plus	25%
	NH Black	2%	Immigration	immigrants	52%
	NH Asian/Pac.Isl.	18%		naturalized	66%
	NH Native Amer.	0%	Language spoken at home	english	33%
Citizen Voting Age Pop	Total	129,718		spanish	14%
	Hisp	17%		asian-lang	10%
	NH White	65%		other lang	43%
	NH Black	3%	Language Fluency	Speaks Eng. "Less than Very Well"	32%
	Asian/Pac.Isl.	15%		Education (among those age 25+)	hs-grad
	Native Amer.	0%	bachelor		28%
Total	118,402	graduatedegree	15%		
Voter Registration (Nov 2020)	Latino est.	17%	Child in Household	child-under18	27%
	Spanish-Surnamed	15%	Pct of Pop. Age 16+	employed	62%
	Asian-Surnamed	6%		Household Income	income 0-25k
	Filipino-Surnamed	3%	income 25-50k		15%
	NH White est.	73%	income 50-75k		14%
	NH Black	2%	income 75-200k		37%
Total	85,200	income 200k-plus	13%		
Voter Turnout (Nov 2020)	Latino est.	17%	Housing Stats	single family	36%
	Spanish-Surnamed	16%		multi-family	64%
	Asian-Surnamed	6%		rented	66%
	Filipino-Surnamed	3%		owned	34%
	NH White est.	72%	Total population data from California's adjusted 2020 Census data. Citizen Voting Age Population, Age, Immigration, and other demographics from the 2017-2021 American Community Survey and Special Tabulation 5-year data. Turnout and Registration data from California Statewide Database. "Latino" figures calculated by NDC using Census Bureau's Latino undercount by surname estimate.		
	NH Black	2%			
Voter Turnout (Nov 2018)	Total	53,067			
	Latino est.	18%			
	Spanish-Surnamed	17%			
	Asian-Surnamed	6%			
	Filipino-Surnamed	3%			
	NH White est.	71%			
NH Black est.	2%				

Latino CVAP

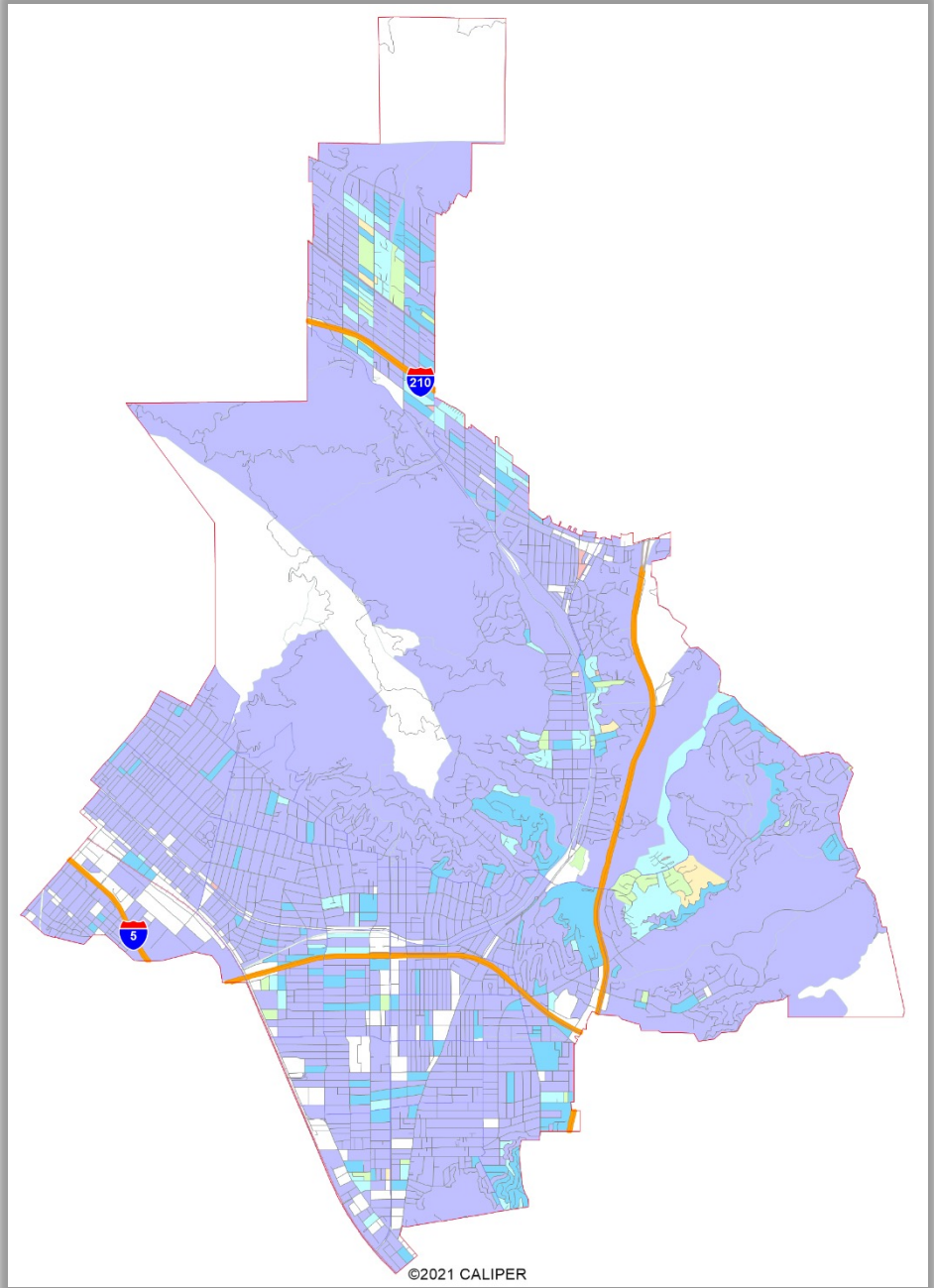
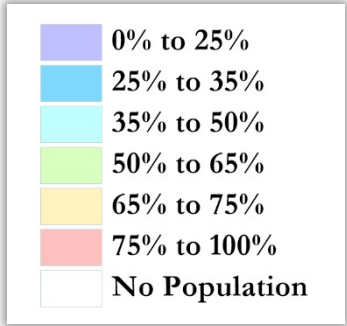
Latinos are somewhat more concentrated along the I-5 corridor and Los Angeles City border.



©2021 CALIPER

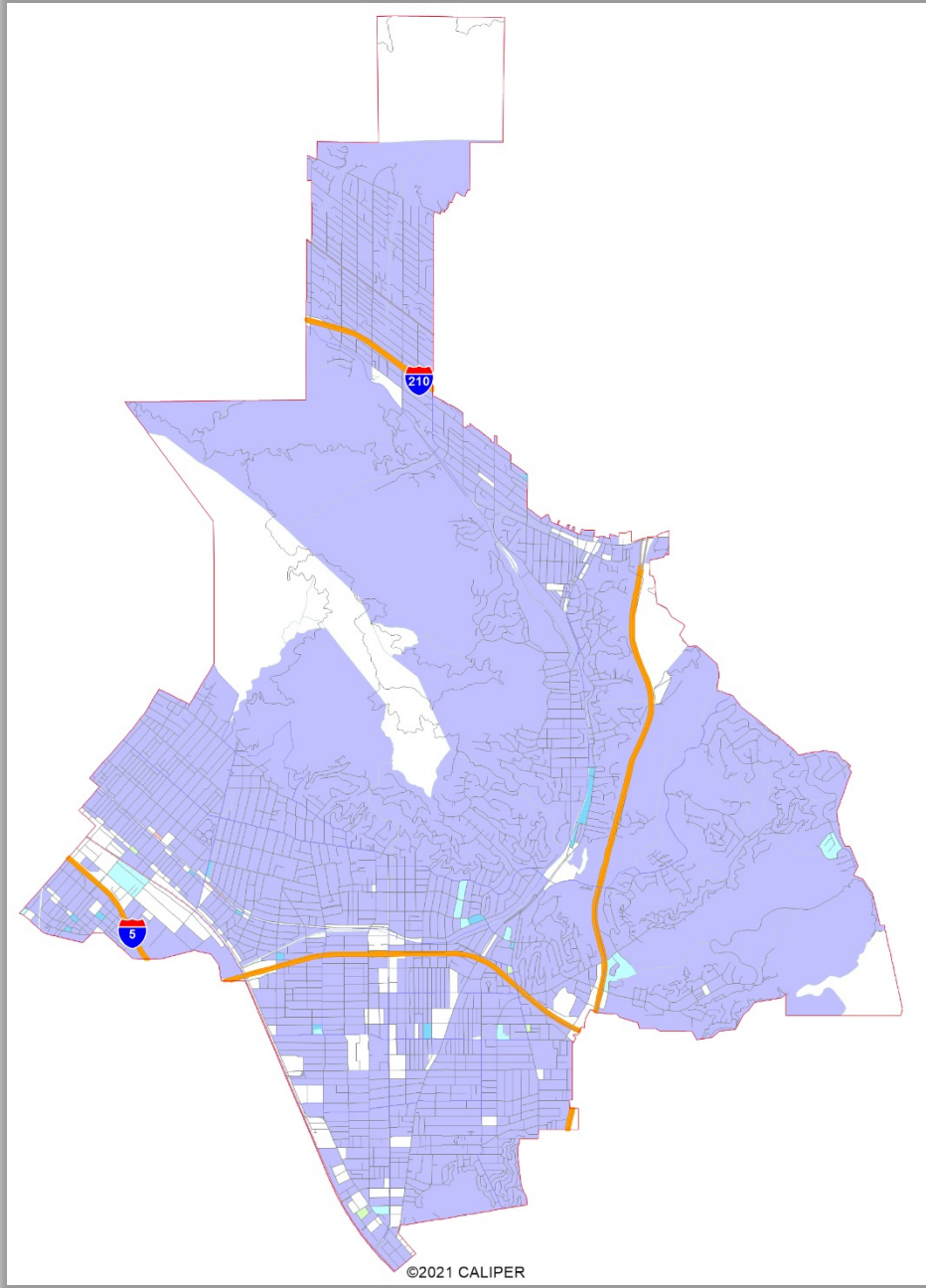
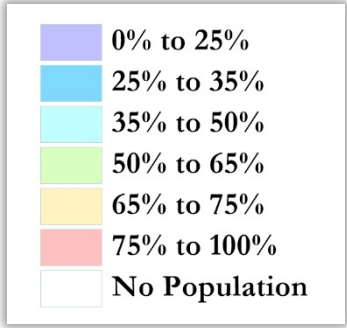
Asian-American CVAP

Asian-Americans concentrated in the north and Rancho San Rafael.



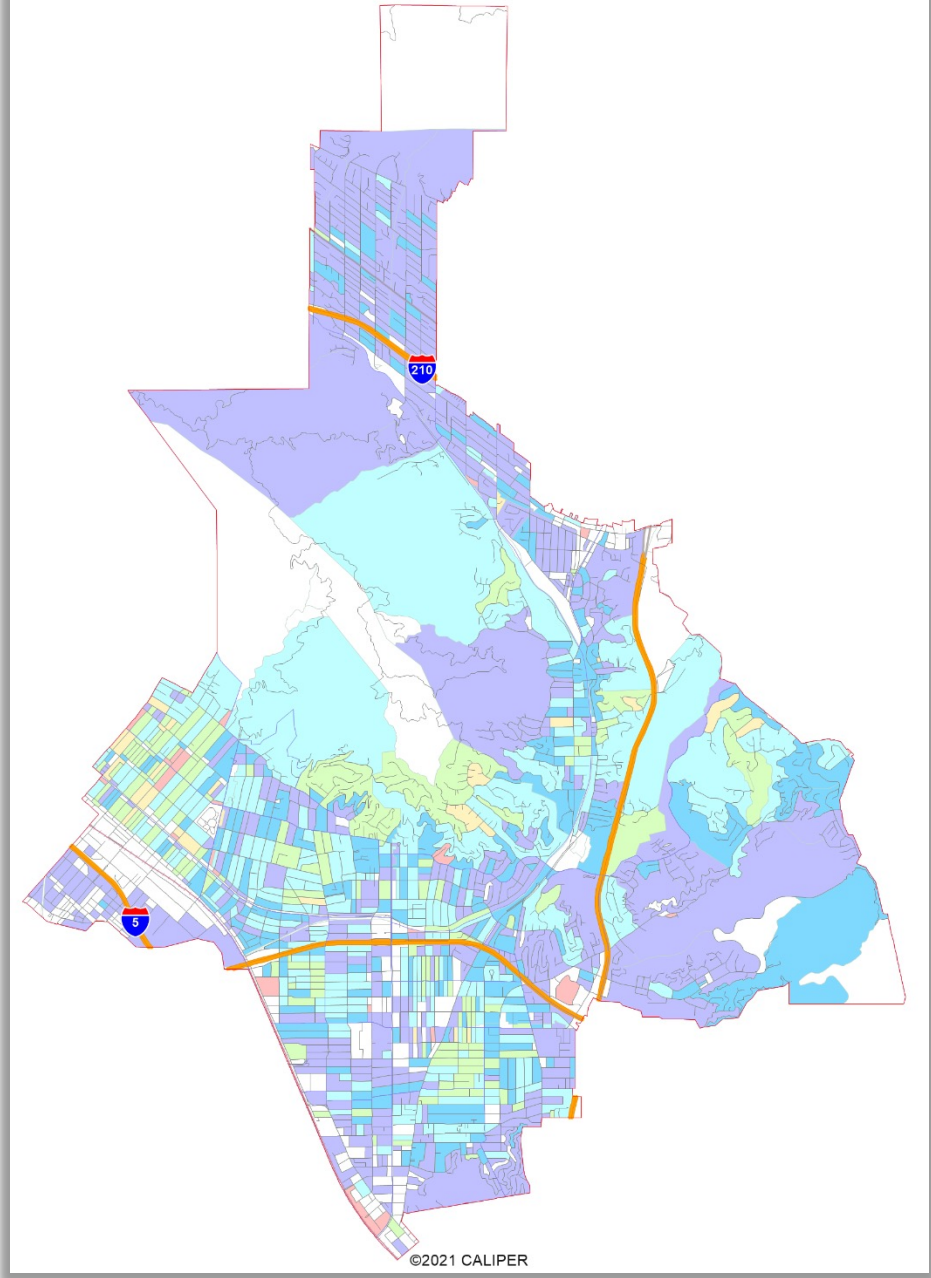
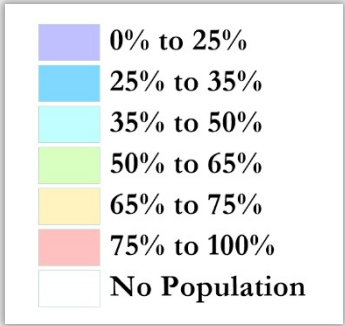
African-American CVAP

African-Americans are not geographically concentrated in any specific part of the City.



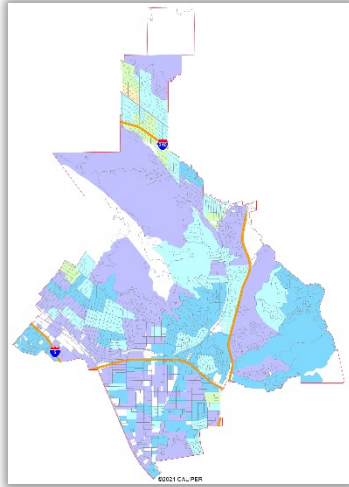
Community of Interest: Armenian % of Registered Voters

Data from PDI.

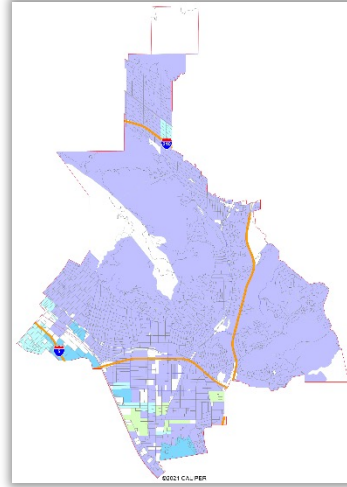


Other Potential Communities of Interest: Socio-Economic Demographics

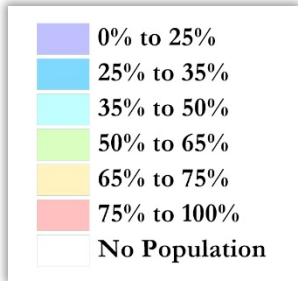
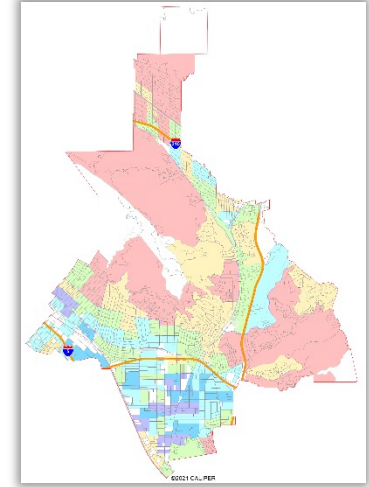
Child at home



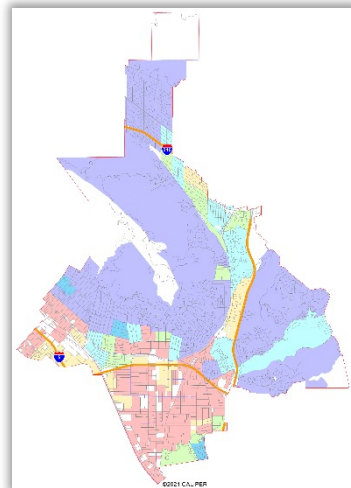
Spanish spoken at home



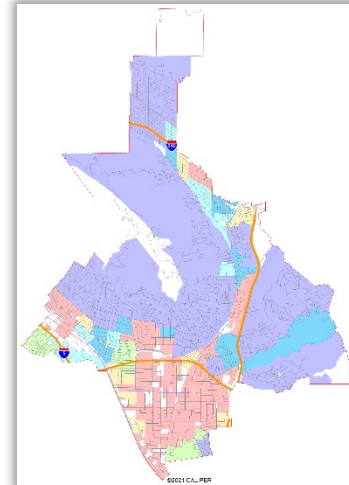
Household income over \$75,000 / yr.



Renters

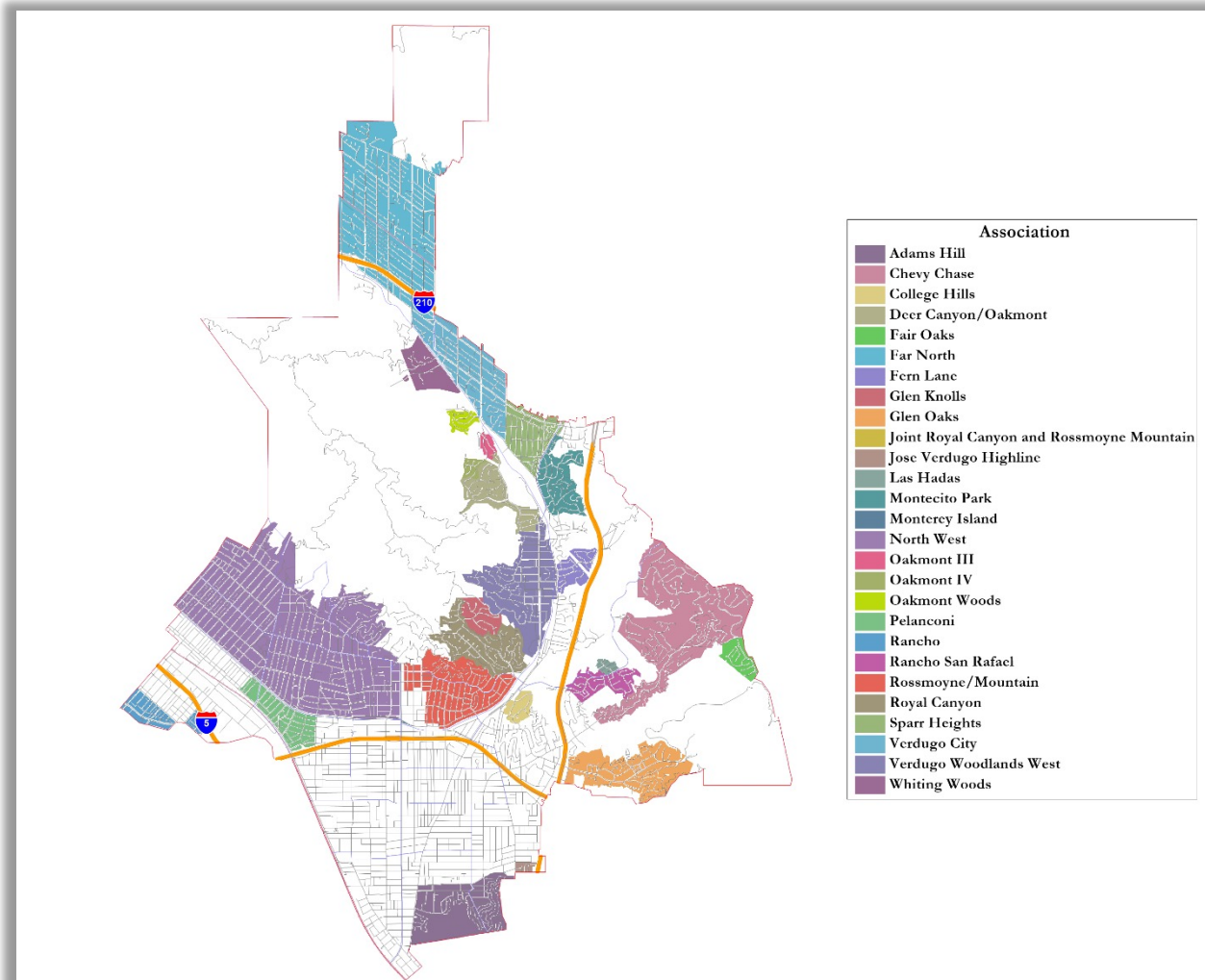


Multi-Family Housing
(Apartments or Condos)



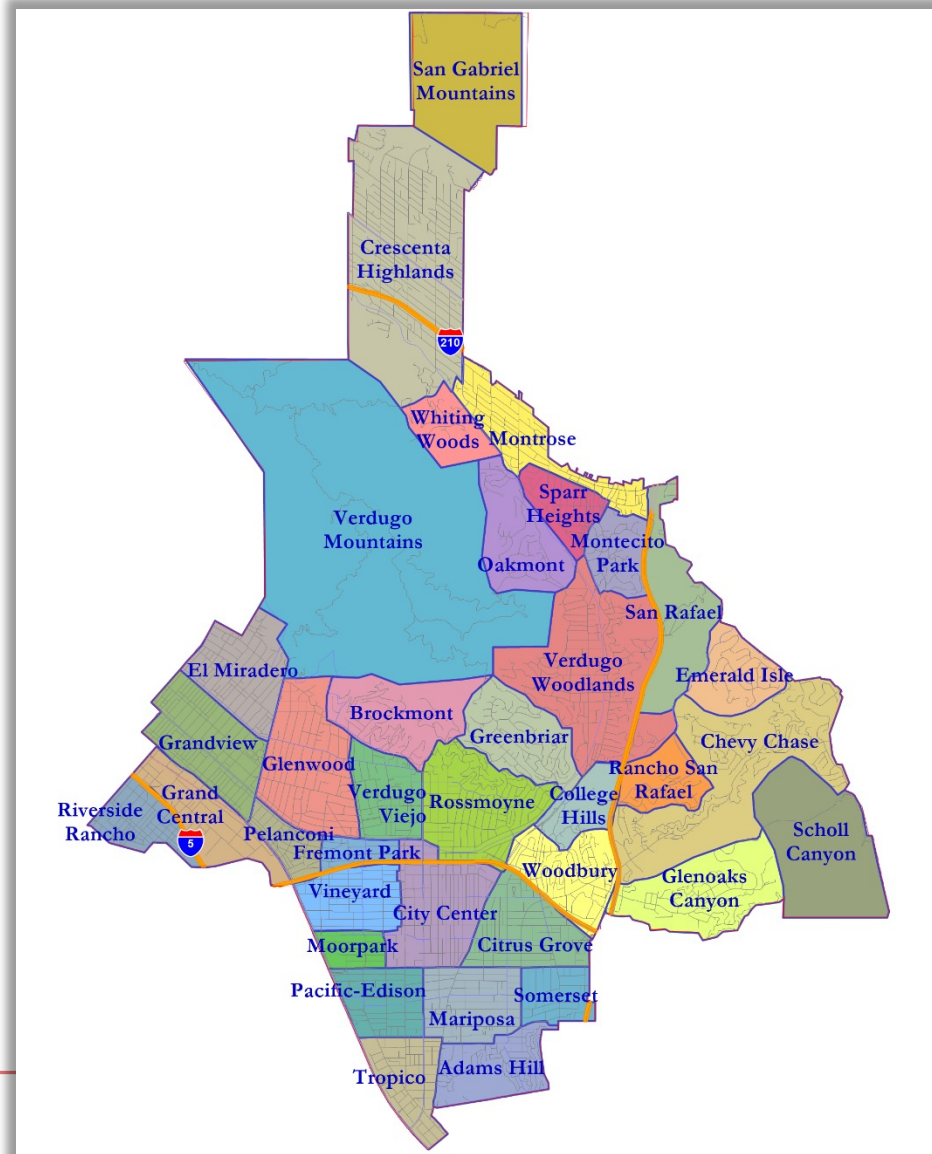
Other Possible Geographic Communities (1)

Homeowner Associations



Other Possible Geographic Communities (2)

Unofficial Rough Neighborhoods



Defining Neighborhoods

1st Question: What is your neighborhood?

2nd Question: What are its geographic boundaries?

Examples of physical features defining a neighborhood boundary:

- ❑ Natural neighborhood dividing lines, such as highway or major roads, rivers, canals and/or hills
- ❑ Areas around parks or schools
- ❑ Other neighborhood landmarks

In the absence of public testimony, planning records and other similar documents may provide definition.



Beyond Neighborhoods: Defining Communities of Interest

1st Question: What defines your community?

- ❑ Geographic Area, plus
- ❑ Shared issue or characteristic
 - ❑ Shared social or economic interest
 - ❑ Impacted by city policies
- ❑ Tell us “your community’s story”

2nd Question: Would this community benefit from being “included within a single district for purposes of its effective and fair representation”?

- ❑ Or would it benefit more from having multiple representatives?

Definitions of Communities of Interest may not include relationships with political parties, incumbents, or political candidates.

Community of Interest Input

- From the June 21 & June 26 community workshops:
 - ▣ Crescenta Highlands and the Far North
 - ▣ Verdugo mountains
 - ▣ Glendale Unified School District
 - ▣ Glendale Community College
 - ▣ South Glendale renters (south of Colorado)
 - ▣ Northwest neighborhood – single family homes
 - ▣ Branch libraries & civic center

Your Turn – Communities of Interest

- ❑ Who is part of your community?
- ❑ What are some meaningful places your community recognizes or gathers at?
- ❑ What are some common concerns you share with a group?
- ❑ What are some common cultural characteristics that unite a community?
- ❑ What are common work-related traits that bring a community together?
- ❑ What is significant about the physical environment?
- ❑ What areas benefit from staying together in a district?

Your thoughts will become part of the record.

Public Mapping and Map Review Tools

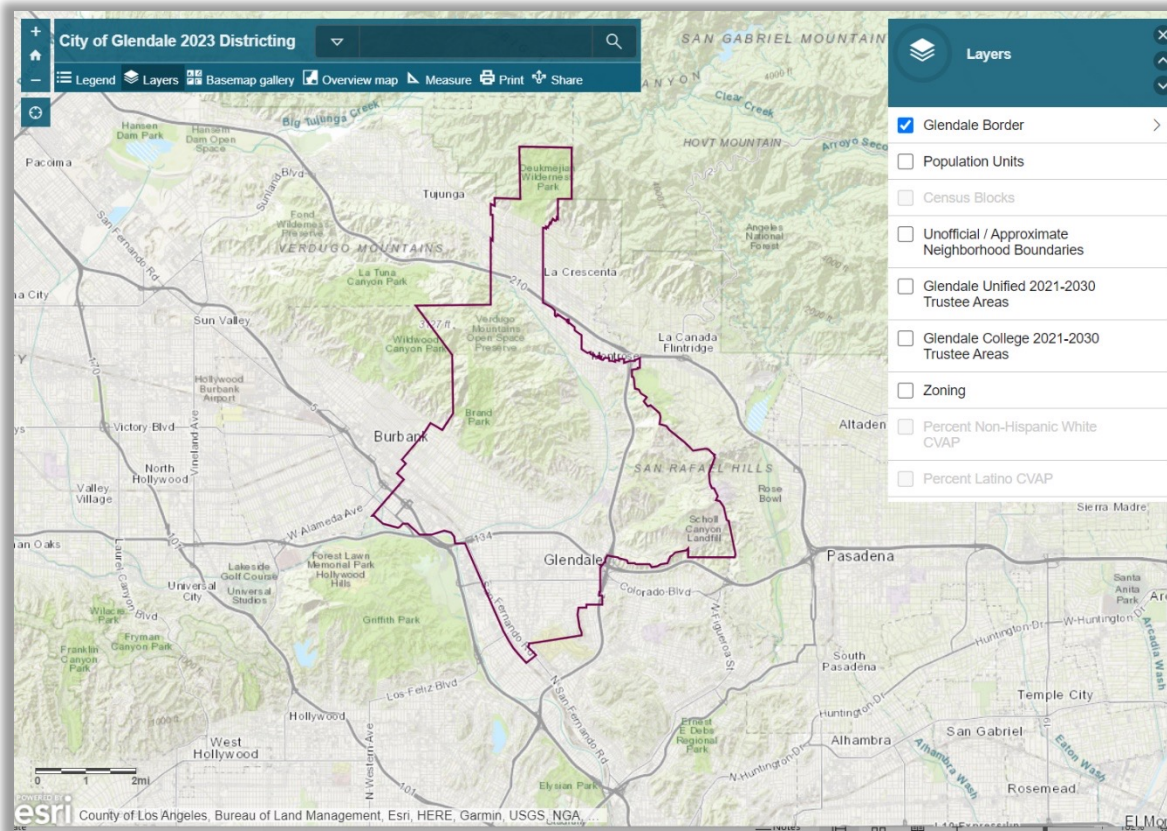
- ❑ Different tools for different purposes
- ❑ Different tools for different levels of technical skill and interest
 - ❑ Simple “review draft maps” tool
 - ❑ Paper-based simple “Draw a draft map” tool
 - ❑ Powerful, data-rich “Draw a draft map” online tool

Whether you use the online mapping tool, the paper kit, or just draw on a napkin, we welcome your maps!

Interactive Review Map

For Viewing Maps, not Drawing Them

- ❑ Demographic data
- ❑ Population Unit details
- ❑ Zoom in and out
- ❑ Search by address
- ❑ View (and overlay) draft maps, when available

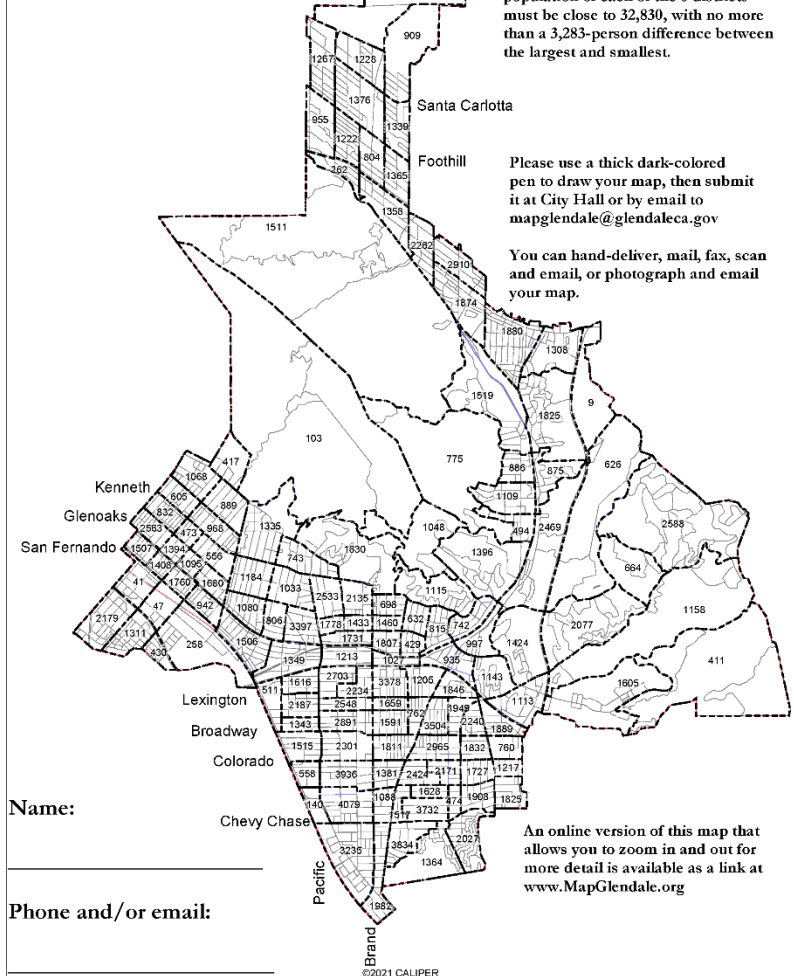


Simple Map Drawing Tool

Paper “Public Participation Kit”

- ❑ For those without internet access or who prefer paper
- ❑ Total Population Counts only – no demographic details

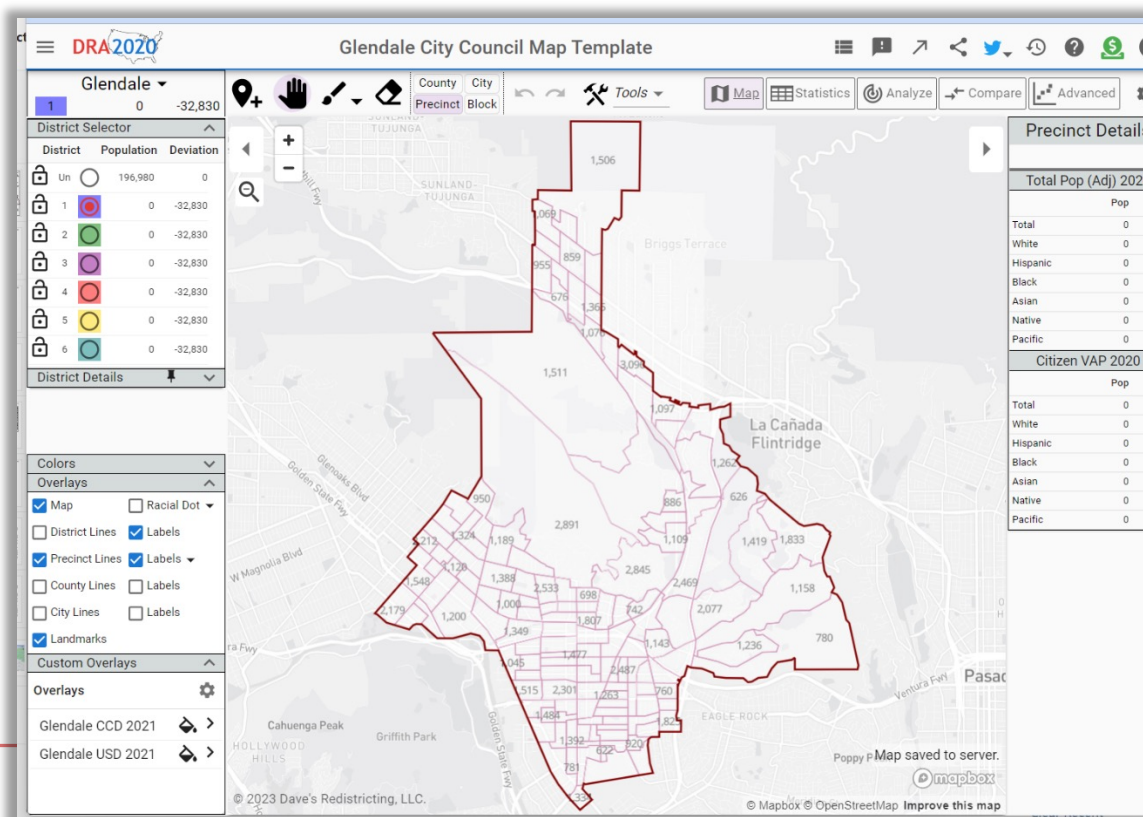
Glendale 2023 Districting Public Participation Kit



DRA (Dave's Redistricting App)

Draw Your Community of Interest or a Full District Map

- Easy-to-use online mapping tool
- Full demographic and geographic database
- Email a link to your map to the City and publish or share

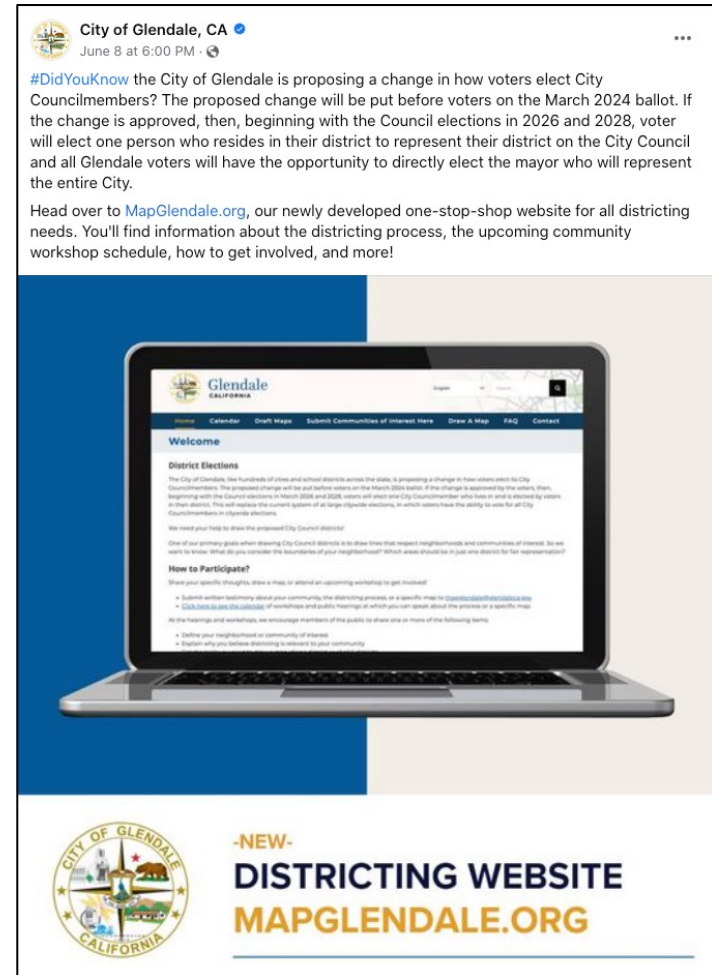


Q&A With Your Hosts

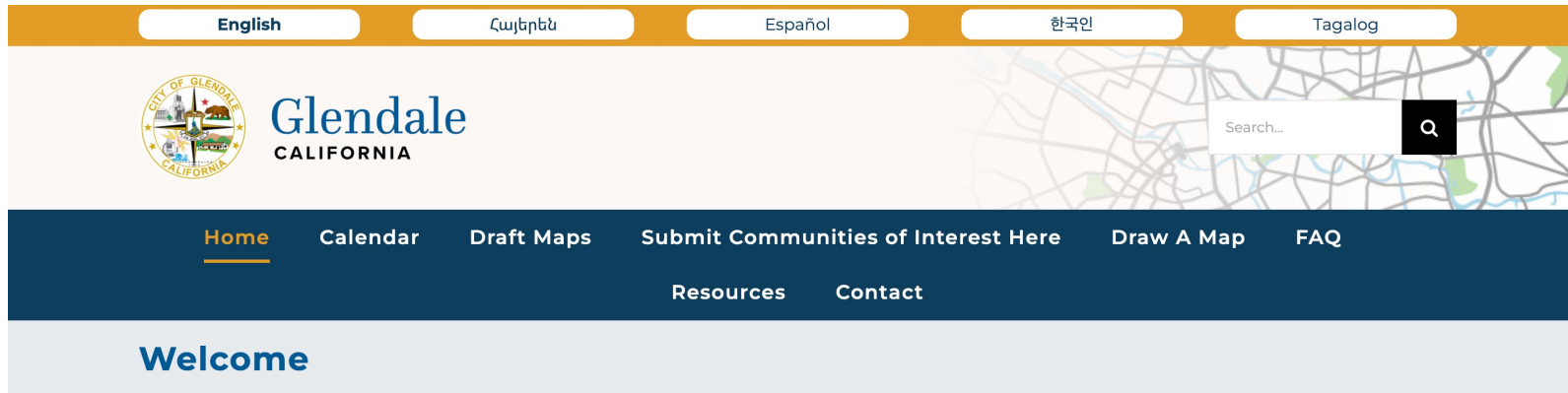
How to Stay Engaged

The City is committed to robust outreach and engagement throughout the process, including the following:

- Dedicated website:
www.mapglendale.org
- In-person workshops
- Virtual workshops
- Pop-up events in the community
- Social media (including online ads)
- Animated explainer video
- Flyers
- Community group outreach
- Interpretation/translation of materials



How to Stay Engaged



District Elections

The City of Glendale has passed a resolution of intent to change from citywide elections to district elections to elect its City Councilmembers. The proposed change will be put before voters on the March 2024 ballot. The City is considering a plan for six (6) separate council districts and a directly elected mayor. If this plan is approved by the voters, this would take effect beginning with Council elections starting in 2026. Voters would have the opportunity to elect one City Councilmember who lives in and is elected by voters in their district and all Glendale voters would vote to select their next Mayor.

We need your help to draw the proposed City Council districts!

One of our primary goals when drawing City Council districts is to draw lines that respect neighborhoods and communities of interest. So we want to know: What do you consider the boundaries of your neighborhood? Which areas should be in just one district for fair representation?

English

Հայերեն (Armenian)

Español (Spanish)

Website: MapGlendale.org | Phone: (818) 548-4844, ext. 1

Email: mapglendale@glendaleca.gov